

KMT
WATERJET

NEO SERIES

Leading Edge Technology for Today



Powering the World in Waterjet Technology



55,000 psi
3,800 bar

60,000 psi
4,100 bar

90,000 psi
6,200 bar

PERFORMANCE AT A VALUE

NEO[®] SERIES



WORLD CLASS ENGINEERING AND DESIGN IN 30HP & 50HP

The KMT Waterjet NEO Pump incorporates over 50 years of experience offering unparalleled waterjet cutting technological achievements. From the proven performance of our threaded high-pressure cylinders which eliminates any misalignment during assembly, to our leading-edge hydraulic control valve design that provides seamless, lag free topworks shifting, the NEO is Best in Class.



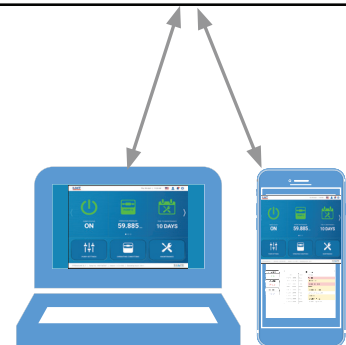
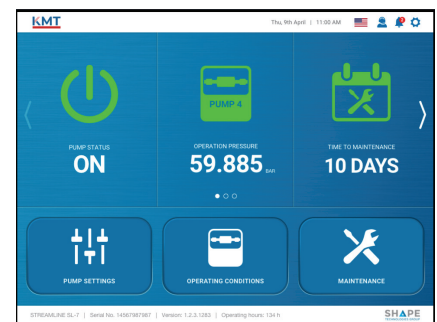
FIRST IN CLASS COMMAND AND CONTROL

The NEO pump command & control is performed from the OEM's controller via ethernet connection. The user friendly controls, alarms, data storage, and pump operating parameters are monitored and performed locally at the OEM's controller. This cutting edge technology permits real time monitoring and puts the command and control with the operator.

PROVEN PERFORMANCE AND RELIABILITY

Time tested & proven performance of the NEO components are the foundation for its Lowest Cost of Ownership. The superior design of the patented high pressure seals ensures maximum uptime & continuous cutting. Consideration for the operator from removable doors, easily accessible dump valve, and the ergonomic design of the topworks, all combine to make the NEO the Industry Leader.

Remote HMI



STANDARD FEATURES ON THE NEO

- ✓ Proportional Control Provides Ultimate Pressure Control
- ✓ Booster Pump For Positive Water Pressure to Topworks
- ✓ Soft Start Motor Eliminates Voltage Spikes

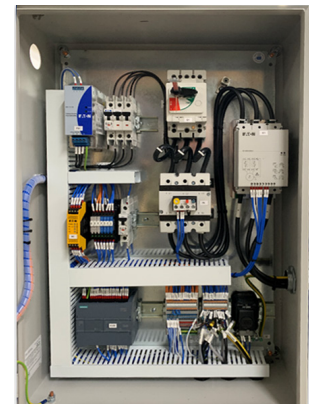
BENEFITS OF THE NEO DESIGN

- ✓ Threaded Cylinder Design Provides Least Down Time & Exacting Alignment
- ✓ Patent Protected HP Seals Design Provides Maximum Life
- ✓ Lag Free Hydraulic Shifting
- ✓ Advanced Command & Control Offers Real Time Monitoring/Control
- ✓ Removeable Magnetic Doors For Faster Maintenance
- ✓ Ergonomic Dump Valve Location For Ease Of Maintenance



NEO OPTIONS

- ✓ Available in 30HP and 50HP
- ✓ Extended PM Program Available
- ✓ Oil/Air Cooler
- ✓ Food Grade Oil



SPECIFICATIONS

DESCRIPTION	NEO 30	NEO 50
Motor Rating	30 HP 22kW	50HP/37KW
Pressure Range	10,000 - 60,000 PSI	10,000 - 60,000 PSI
Max. Flow Rate	0.62 GPM @ 60,000 PSI	1.0 GPM @ 60,000 PSI
Max. Orifice <small>*Contact KMT for information on orifice size with multiple cutting heads.</small>	0.11" 0,28 mm	.014" @ 60,000 PSI
Dimensions	60.16" x 42.17" x 48.23"	60.16" x 42.17" x 48.23"
Weight	2,323 lbs	2,505 lbs
CUTTING WATER CIRCUITRY		
Accumulator Volume	1.0 L	1.0 L
Min. Cutting Water Pressure	45 PSI	45 PSI
Min. Cutting Water Inlet Flow Rate	2 Gallon	2 Gallon
Booster Pump	INCLUDED	INCLUDED
ELECTRICAL & CONTROLS		
Soft Start Motor Starter	INCLUDED	INCLUDED
Proportional Pressure Control	INCLUDED	INCLUDED
Control System	Siemens S7-1200	Seimens S7-1200
Interface Connection	MODBUS TCP/IP via Ethernet	MODBUS TCP/IP via Ethernet
Display	via web - HMI (Multi-Language)	via web - HMI (Multi-Language)
COOLING CIRCUITRY		
Cooling Mode	Oil/Water	Oil/Water
Ambient Temp. Oil/Water Enchanger	40 degrees - 113 degrees F	40 degrees - 113 degrees F
Ambient Temp. Air/Oil Exchanger	40 - 86 Degrees F Max (OPTIONAL)	40 - 86 Degrees F Max (OPTIONAL)
Cooling Water Pressure	35 - 100 PSI	35 - 100 PSI
Cooling Water Consumption @ 75 degrees	3 GPM	3 GPM

NEW | 2.0 | KMT CUT CALCULATOR APP



Compare cutting materials and cut speeds at 90,000 psi vs. 60,000 psi.

The KMT Calculator **2.0** now incorporates 25 materials, offers a wider range of substrate thicknesses, horsepower, orifice size & abrasive rates.

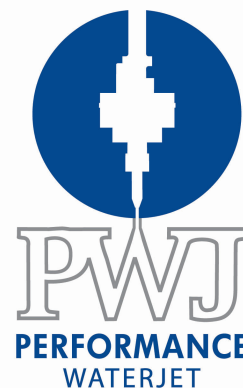
KMT WATERJET Genuine Parts & Service

Your business is worth it.

SHAPE TECHNOLOGIES GROUP®

Backed by KMT Preventive Maintenance Programs

Our Global KMT Genuine Service Teams are highly qualified, averaging 15+ years of waterjet experience.



Performance Waterjet

1300 722 559

www.performancewaterjet.com.au

KMT. Powering the World
in Waterjet Technology
for Over 50 Years

